

# 2018 PROJECTS HANDBOOK

## GANI MARBLE TILES

### FOSHAN GANI CERAMICS CO., LTD.

Add: 2nd-5th Floor, T10, Smart City, No.28, Jihua 1st Road,  
Chancheng District, Foshan, Guangdong, China

Tel: 86-757-8258 6585 / 8258 2784 / 8258 3571 / 8236 8009

Email: [info@ganimarbletiles.com](mailto:info@ganimarbletiles.com)

[www.ganimarbletiles.com](http://www.ganimarbletiles.com)



# **GANI MARBLE TILES**

## CORPORATE PHILOSOPHY

Marble is fascinating the human kind since the rise of every civilization. Marble's beauty is universal and we can't renounce to it, but at the same time it is extremely fragile. So many wonderful marbles don't exist anymore. Our mission is to create an alternative option, which doesn't require the destruction of that beauty we admire so much, without renouncing to it. We dream about a future where natural marbles will no longer be used in extensive applications, and at the same time more people will be allowed to responsibly enjoy the beauty of marble.

So, GANI comes from its founder passion for marble and marbles' pure and elegant beauty. The desire for knowledge about marble leads to discovery of an unbelievably varied nature in every corner of our world. Challenging this kind of search, turned GANI into a marble collector, and collecting the priceless and fragile beauty of marble all around the world.

## GANI IS KNOWN AS THE CREATOR OF MARBLE TILES

GANI Ceramic CO., Ltd., founded in Foshan Guangdong in 2002, pioneered a new porcelain category –Marble Tiles in 2009. Since its birth, Marble Tiles have been widely recognized by various sectors and customers.

The sales network of GANI MARBLE TILES covers more than sixty countries around the world like Italy, France, America, and Australia. With more than five hundreds franchised stores in China and around the world, GANI proactively delivers its quality products and services to dozens of famous projects like hotels, shopping malls, airports, deluxe apartments in Tokyo, Dubai, Paris, Singapore, Seoul, Bangkok, Sydney, Las Vegas, Hong Kong, Shanghai and Beijing. Now more than 1 million families choose GANI MARBLE TILES.







## PRODUCT COLLECTION

71 types  
 120 regular items  
 11 series  
 6 surface effects  
 Wide range of customized accessories  
 Over 300 items in exclusive stone gallery



# C O N T E N T S

**\_05**

HOSPITALITY

**\_33**

COMMERCIAL

**\_67**

RESIDENTIAL

**\_117**

FACADE

**\_127**

COMPANY & PRODUCTS

**\_146**

CERTIFICATES

# PROJECT REFERENCES

High-end decoration with adorable price, easy maintenance, durable and unlimited design application, GANI wins high reputation in hospitality, commercial and residential project practices, successfully working with world class hotel groups, real estate developers, retailer brands, etc.







## HOSPITALITY

GANI is very proud to have worked with the world's leading hotel brands on an exciting range of iconic hotels and has acquired unparalleled experience of the industry. Like all our customers, we are dedicated to helping create the most inspiring and luxurious experience for every single guest.



## HILTON SHENZHEN SHEKOU NANHAI, CHINA

Address: No.1177 Wanghai Road, Nanshan District, Shenzhen, China  
Applied Area: 15,000m<sup>2</sup>

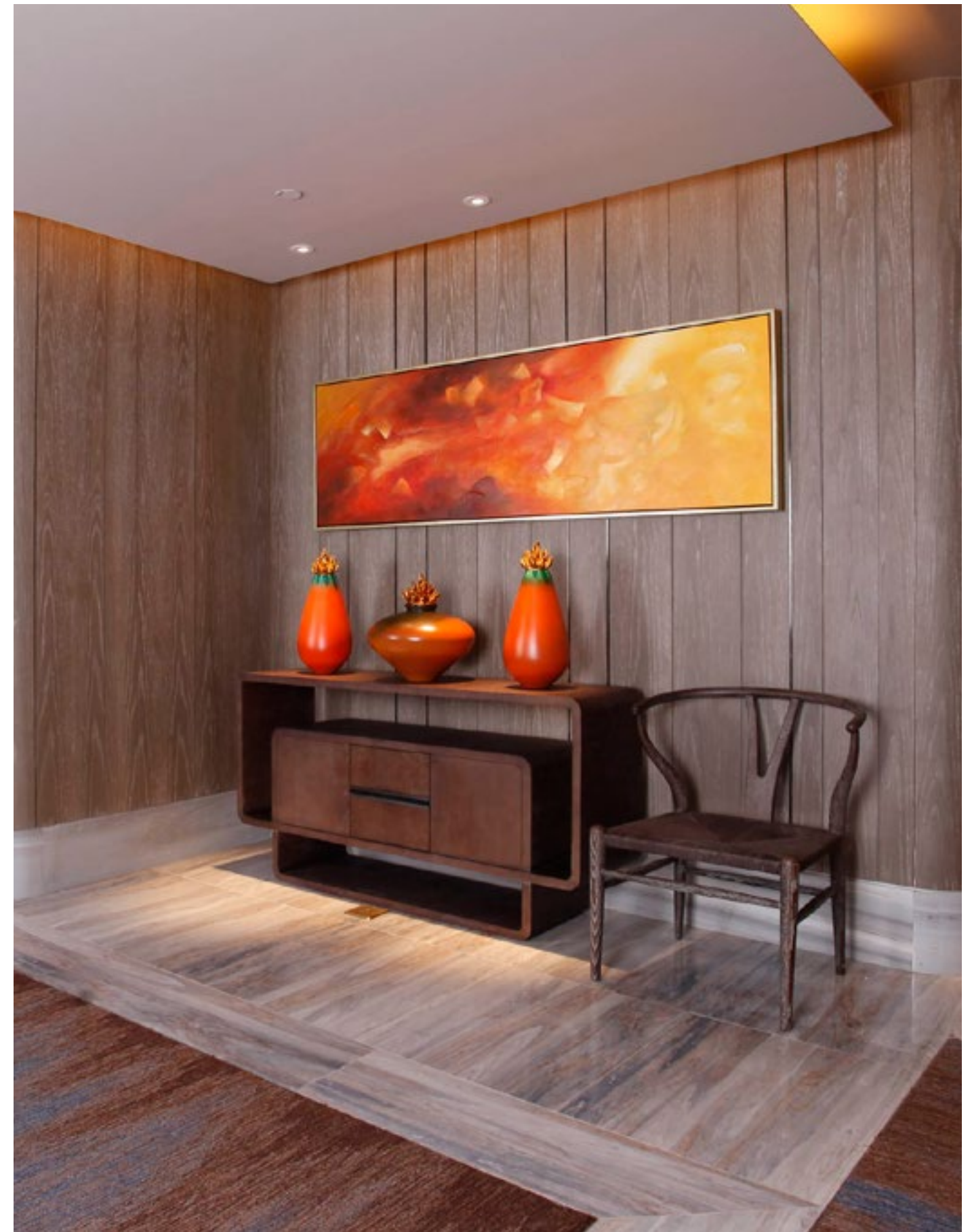
### APPLIED PRODUCTS



PALISSANDRO BLUE



RAINBOW WOOD GRAIN





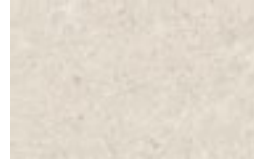




## HILTON SHENZHEN SHEKOU NANHAI WING, CHINA

Address: No.1177 Wanghai Road, Nanshan District, Shenzhen, China  
Applied Area: 13,000m<sup>2</sup>

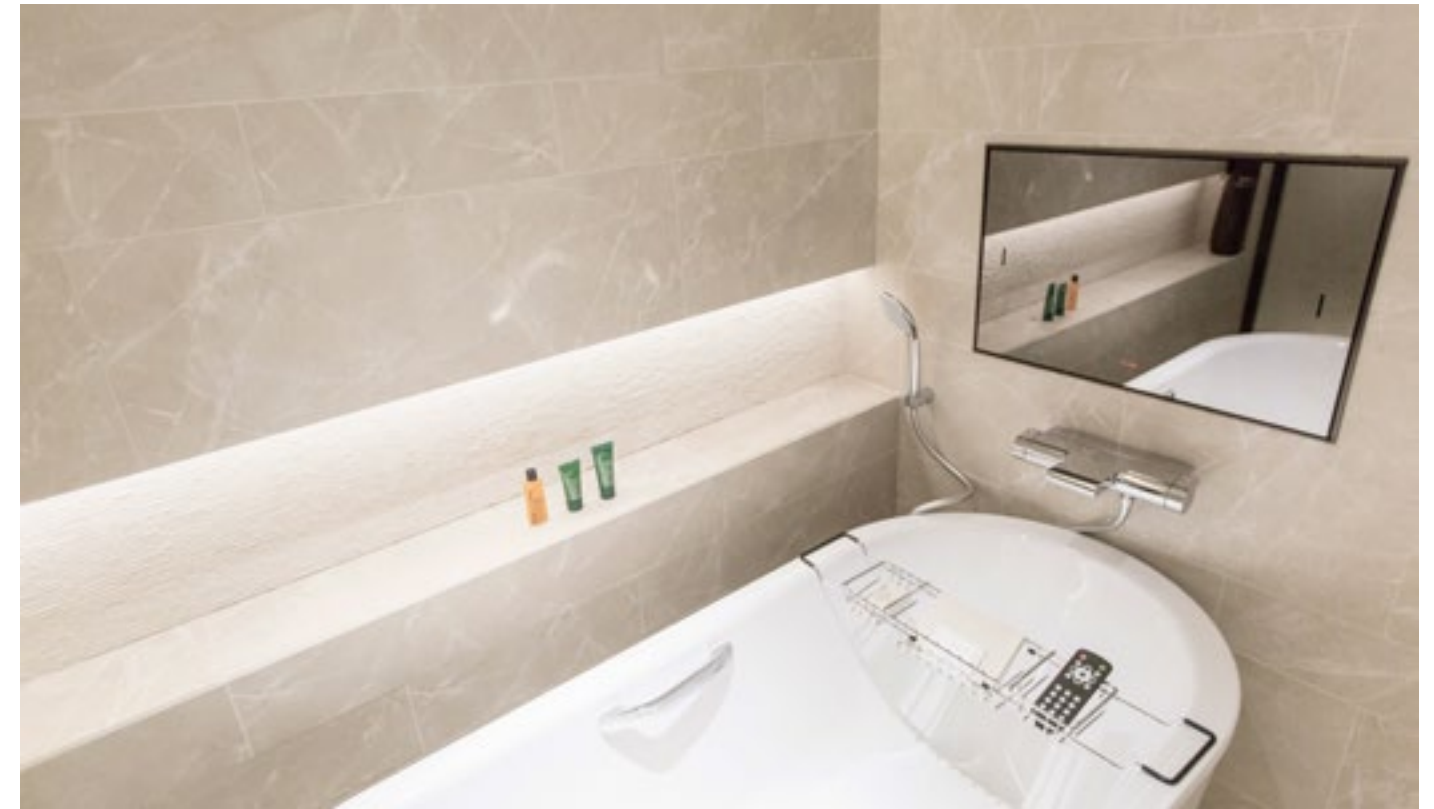
APPLIED PRODUCTS



CUSTOM MADE BEIGE



CUSTOM MADE BEIGE









**HILTON IN FT COLLINS, COLORADO, AMERICA**

APPLIED PRODUCTS



CALACATTA GOLD





HOSPITALITY

# MARRIOTT HOTEL SUKHUMVIT BANGKOK, THAILAND

Address: 2 Sukhumvit Soi 57, Klongtan Nua, Wattana, Sukhumvit, Bangkok, 10110, Thailand

Applied Area: 100,000m<sup>2</sup>

APPLIED PRODUCTS



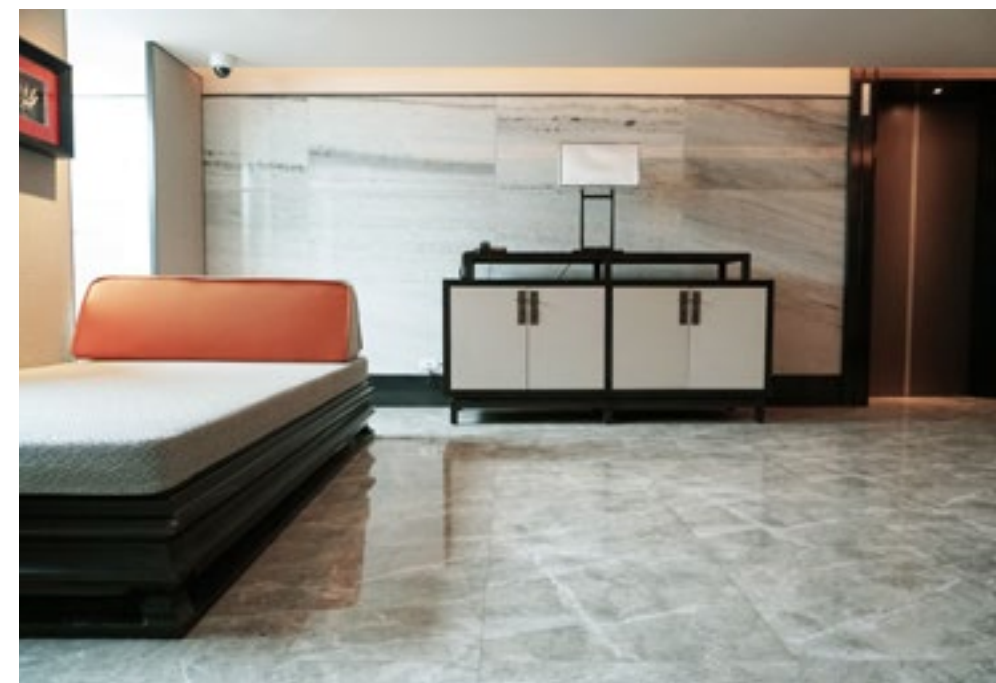
CLOUD GREY



WOOD GRAIN GREY



JET BLACK







## JW MARRIOTT HOTEL PURKET, THAILAND

Applied Area: 60,000m<sup>2</sup>

APPLIED PRODUCTS  
CUSTOM-MADE



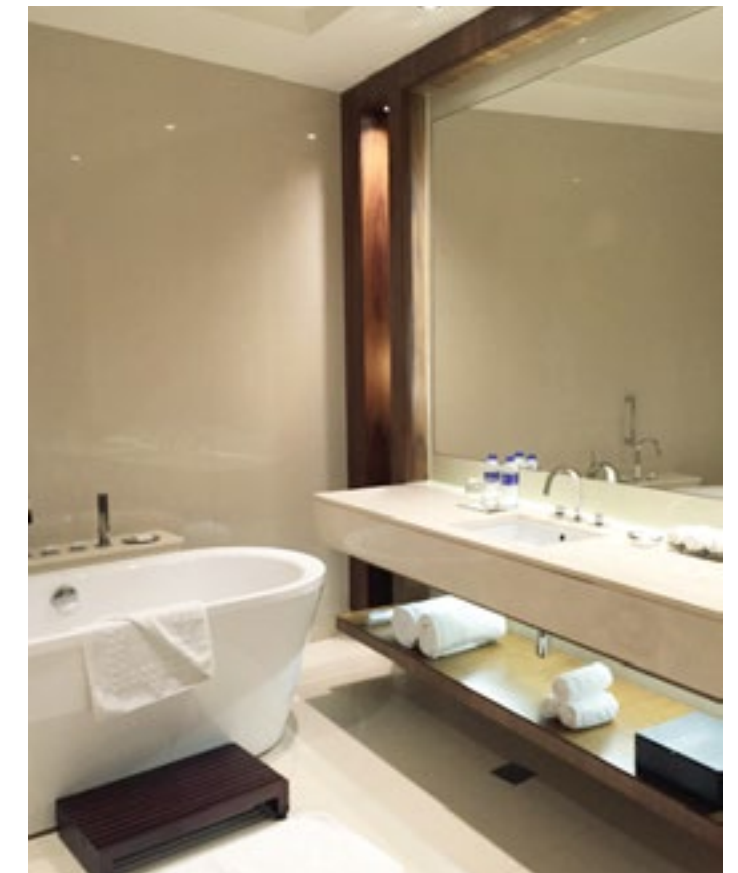
APPLIED PRODUCTS



CALACATTA



VOLAKAS





# THE PARK FRONT HOTEL AT UNIVERSAL STUDIOS, JAPAN

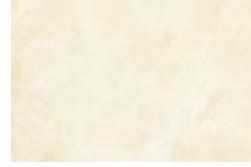
APPLIED PRODUCTS



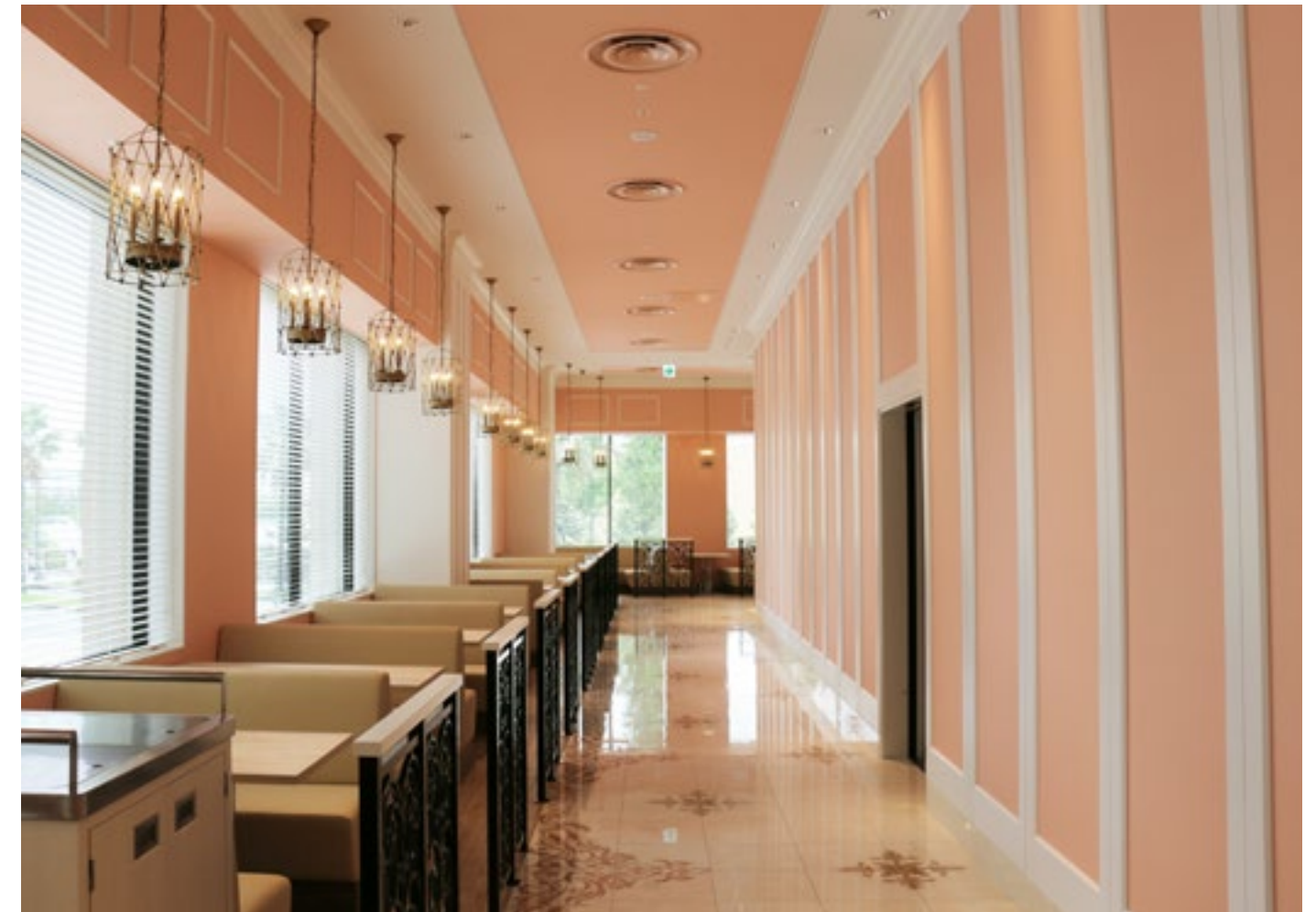
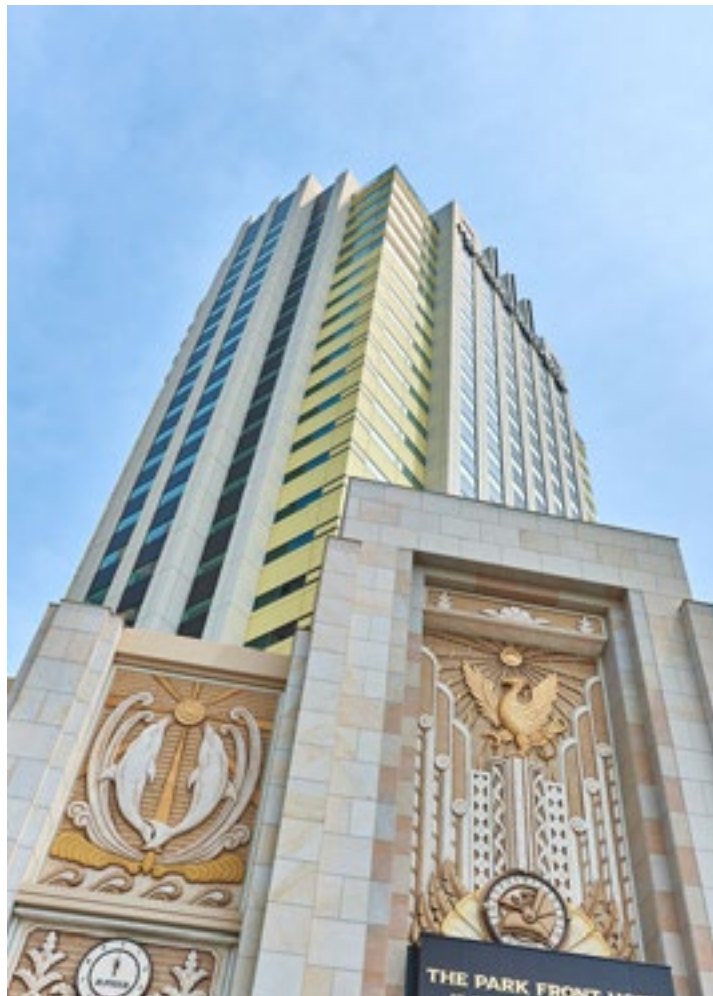
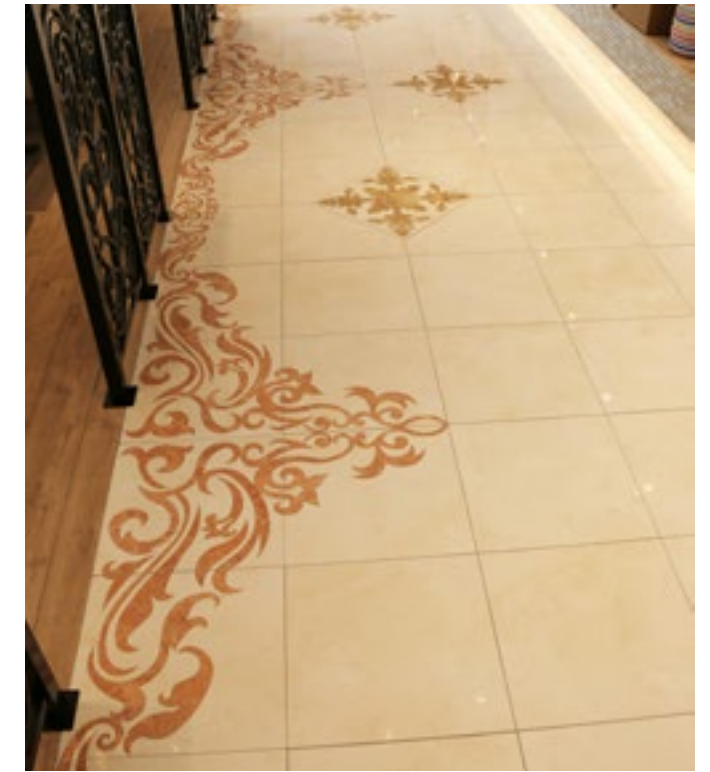
ROSA ZARCI



EMPERADOR LIGHT



CREMA MARFIL





## ROYAL PARK HOTEL THE HANEDA TOKYO, JAPAN

Address: 2-6-5 Haneda International Airport Ota-ku, Haneda Airport/Kamata, Tokyo, Japan  
Applied Area: Apprx 1,000m2

### APPLIED PRODUCTS



JET BLACK





## LONGBEACH SUITES DHAKA, BANGLADESH

Address: House # CEN 4G, Road # 104, Gulshan 02, Dhaka 1212  
Applied Area: 1500m<sup>2</sup>

### APPLIED PRODUCTS



BUTTERFLY RED





HOSPITALITY

LATVIA SEMARAH HOTEL

Applied Area: Apprx 1,000m<sup>2</sup>

APPLIED PRODUCTS



SILVER GREY TRAVERTINE



SERPPEGIANTO



MARRON EMPERADOR





# HARBIN LANDSCAPE GARDEN HOTEL

Applied Area: Apprx 1,000m<sup>2</sup>

## APPLIED PRODUCTS



PALISSANDRO BLUE



GAMPER



CLOUD GREY



LAURENT BLACK





## TV TOWER IN WUHAN

APPLIED PRODUCTS



SERPEGGIANTO







## COMMERCIAL

GANI's products are widely used in commercial application, such as shops, restaurants, cinemas, offices, and conventional centers. Our reputation relies on products' high performance as well as detail service, traceability and safe partnership. The offer we provide is an illustration of fast-response global supply, production and retail network.



## ZARA CHAIN SHOPS

Today GANI supplied to 135 ZARA global shops, delivering over 300,000 sqm, covering Spain, America, Australia, China, Canada, etc.  
Applied Area: 360,000m<sup>2</sup>

APPLIED PRODUCTS



CUSTOM MADE





COMMERCIAL

## ZARA CHAIN SHOPS

Today GANI supplied to 135 ZARA global shops, delivering over 300,000 sqm, covering Spain, America, Australia, China, Canada, etc.  
Applied Area: 360,000m<sup>2</sup>

APPLIED PRODUCTS



CUSTOM MADE





## NINGXIA INTERNATIONAL CONVENTION CENTER, CHINA

Address: Yinchuan, Ningxia Hui Autonomous Region, China  
Applied Area: 51,000m<sup>2</sup>

### APPLIED PRODUCTS



VOLAKAS



BOTTICINO SEMICLASSICO



FIOR DI PESCO CARNICO





COMMERCIAL

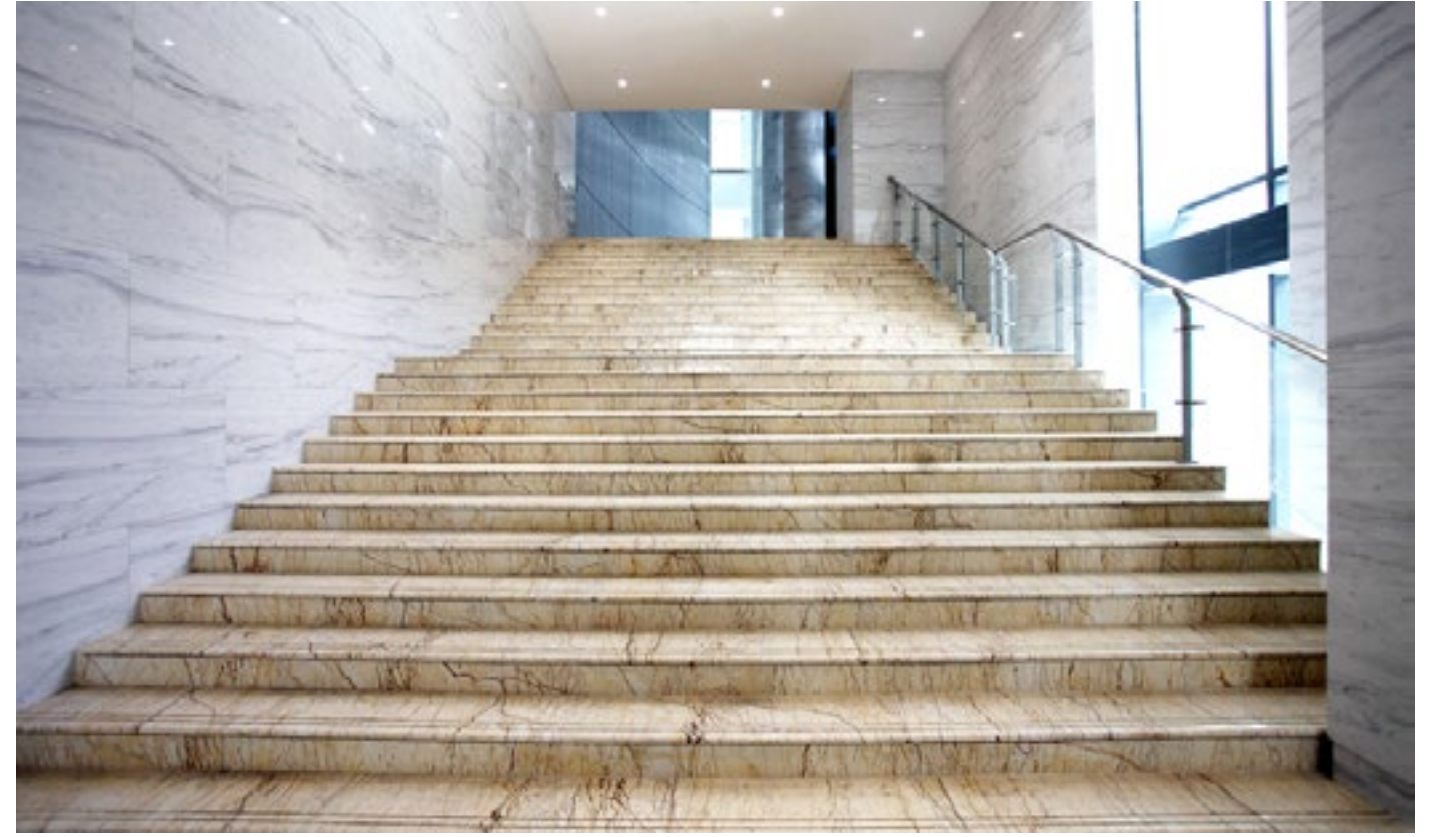
APPLIED PRODUCTS



VOLAKAS



SOFITEL GOLD





## OFFICE IN KHABAROVSK, RUSSIA

Applied Area: 1,400m<sup>2</sup>

APPLIED PRODUCTS



EMPERADOR DARK



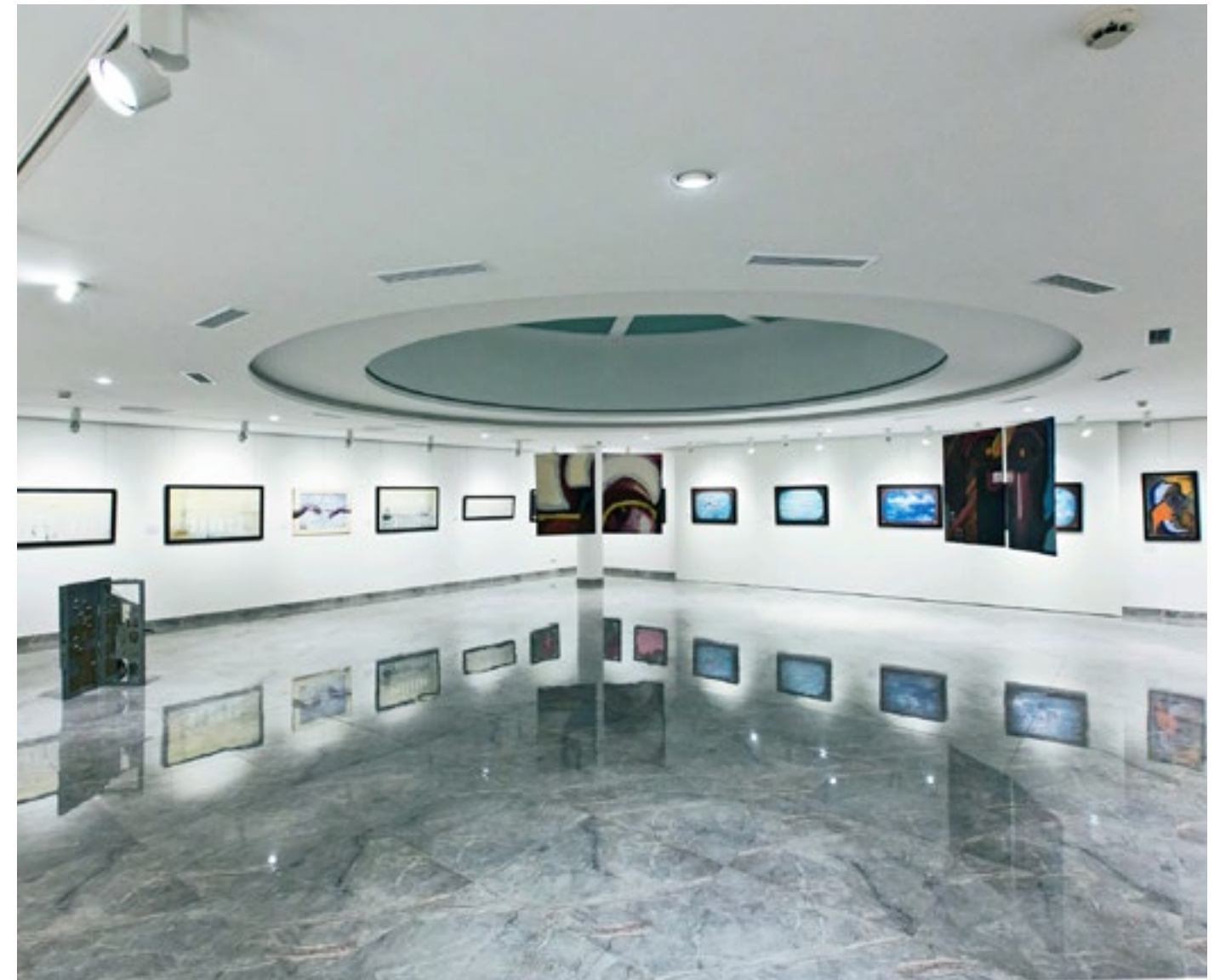
## MUSEUM IN SLOVAKIA

Applied Area: 1,500m<sup>2</sup>

APPLIED PRODUCTS



FIOR DI PESCO CARNICO





# KHABAROVSK CONVENTION CENTER, RUSSIA

Applied Area: 2,500m<sup>2</sup>

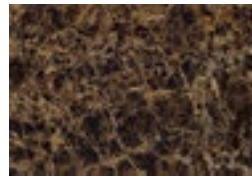
## APPLIED PRODUCTS



GOLDEN BEIGE



EMPERADOR LIGHT



EMPERADOR DARK



JET BLACK





## FASHION SHOP, RUSSIA

APPLIED PRODUCTS



LAURENT BLACK



## JEWELRY SHOP IN KHABAROVSK, RUSSIA

APPLIED PRODUCTS



ROSA ZARCI





## MARRIAGE REGISTRATION OFFICE, RUSSIA

APPLIED PRODUCTS



ONICE CAPPUCCINO



SILVER GREY



GOLDEN BEIGE





# KHABAROVSK SCHOOL IN RUSSIA

APPLIED PRODUCTS



MARRON EMPERADOR



ROSA ZARCI



NERO MARQUINA





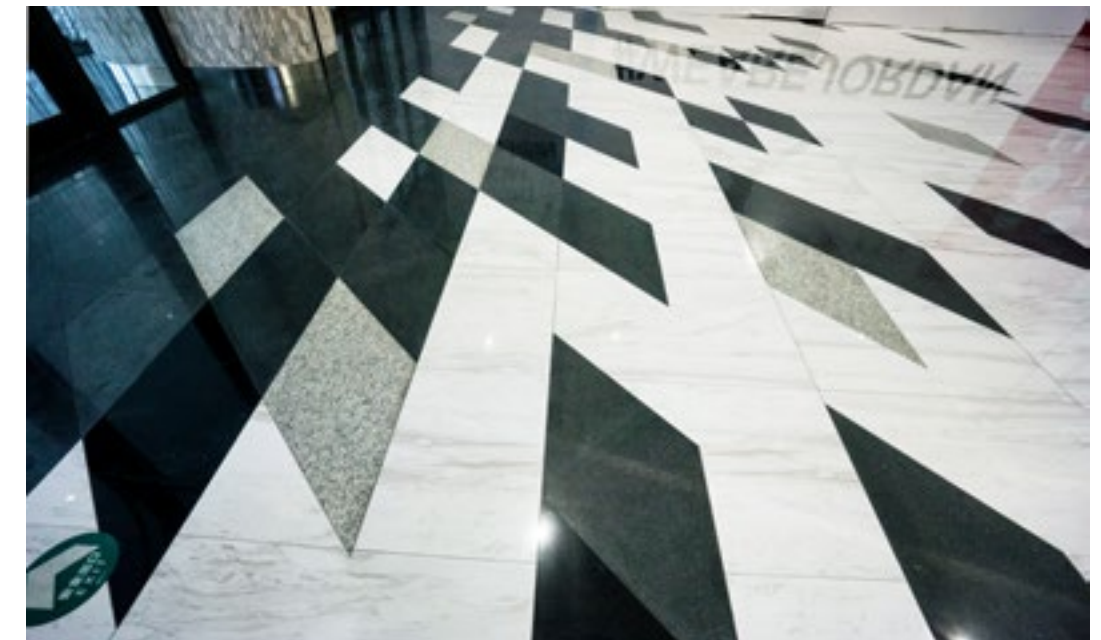
COMMERCIAL

## WEST RED SQUARE, HARBIN CHINA

APPLIED PRODUCTS



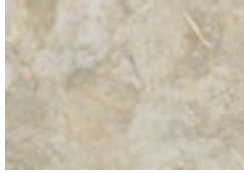
VOLAKAS





## PARISIAN STREET MALL, MACAU

APPLIED PRODUCTS



SLIVEE GREY



## SF CINEMA, EMPORIUM BANGKOK, THAILAND

APPLIED PRODUCTS



FIOR DI PESCO CARNICO



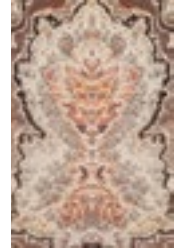


### LI LANG INTERNATIONAL JEWELRY INDUSTRIAL PARK, SHENZHEN, CHINA

APPLIED PRODUCTS



ONICE CAPPUCCINO



PEACOCK WOO



### JINWANGJIAO, TAIZHOU, CHINA

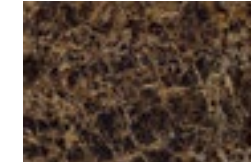
APPLIED PRODUCTS



ONICE CAPPUCCINO



EMPERADOR LIGHT



EMPERADOR DARK



JET BLACK





## KAIDI MANSION, PUNING, CHINA

Applied Area: 17,000m<sup>2</sup>

APPLIED PRODUCTS



ONICE CAPPUCCINO



ITALIAN PORTORO



CLOUD GREY



## BIOLOGIQUE RECHERCHE WOMEN'S CLUB, YONGKANG, CHINA

APPLIED PRODUCTS



ONICE CAPPUCCINO



EMPERADOR DARK



JET BLACK



CALACATTA





### TOBACCO COMPANY IN JILIN

APPLIED PRODUCTS



EMPERADOR DARK



TRAVERTINO ROMANO



### DONGSHAN DASHAO KTV, GUANGZHOU, CHINA

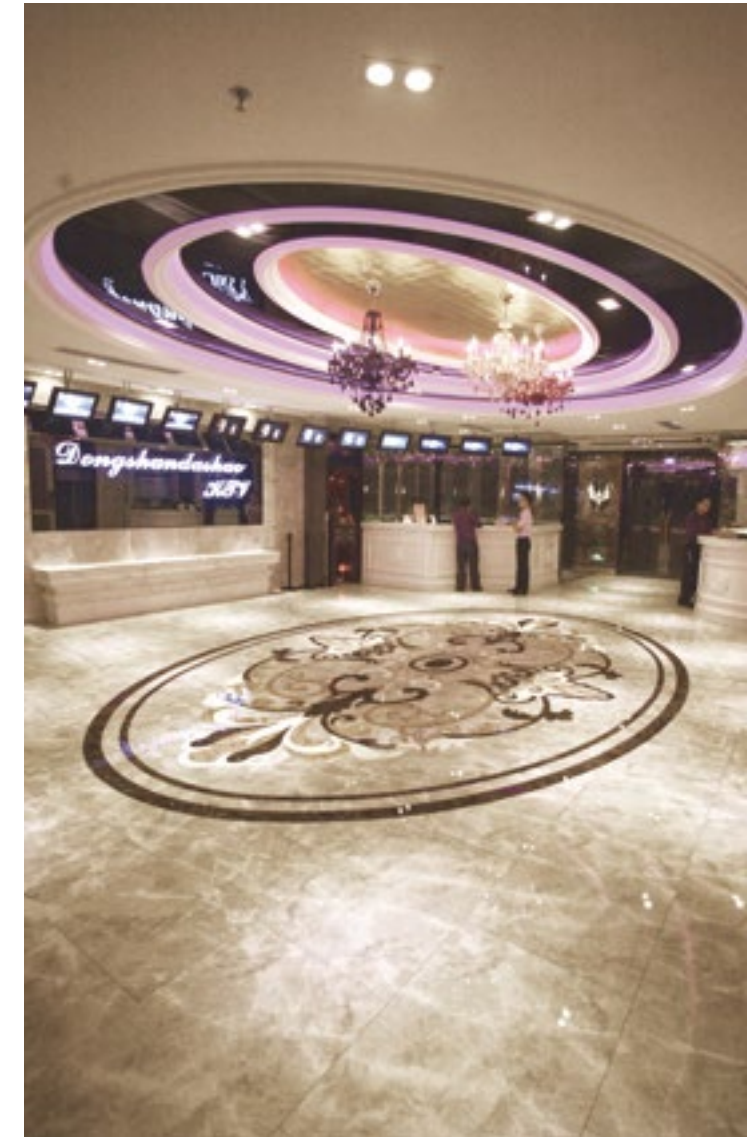
APPLIED PRODUCTS



ONICE CAPPUCCINO



EMPERADOR DARK





# RESORT IN QINGHUANGDAO

APPLIED PRODUCTS



ONICE CAPPUCCINO



EMPERADOR LIGHT





# RESORT IN NANKING

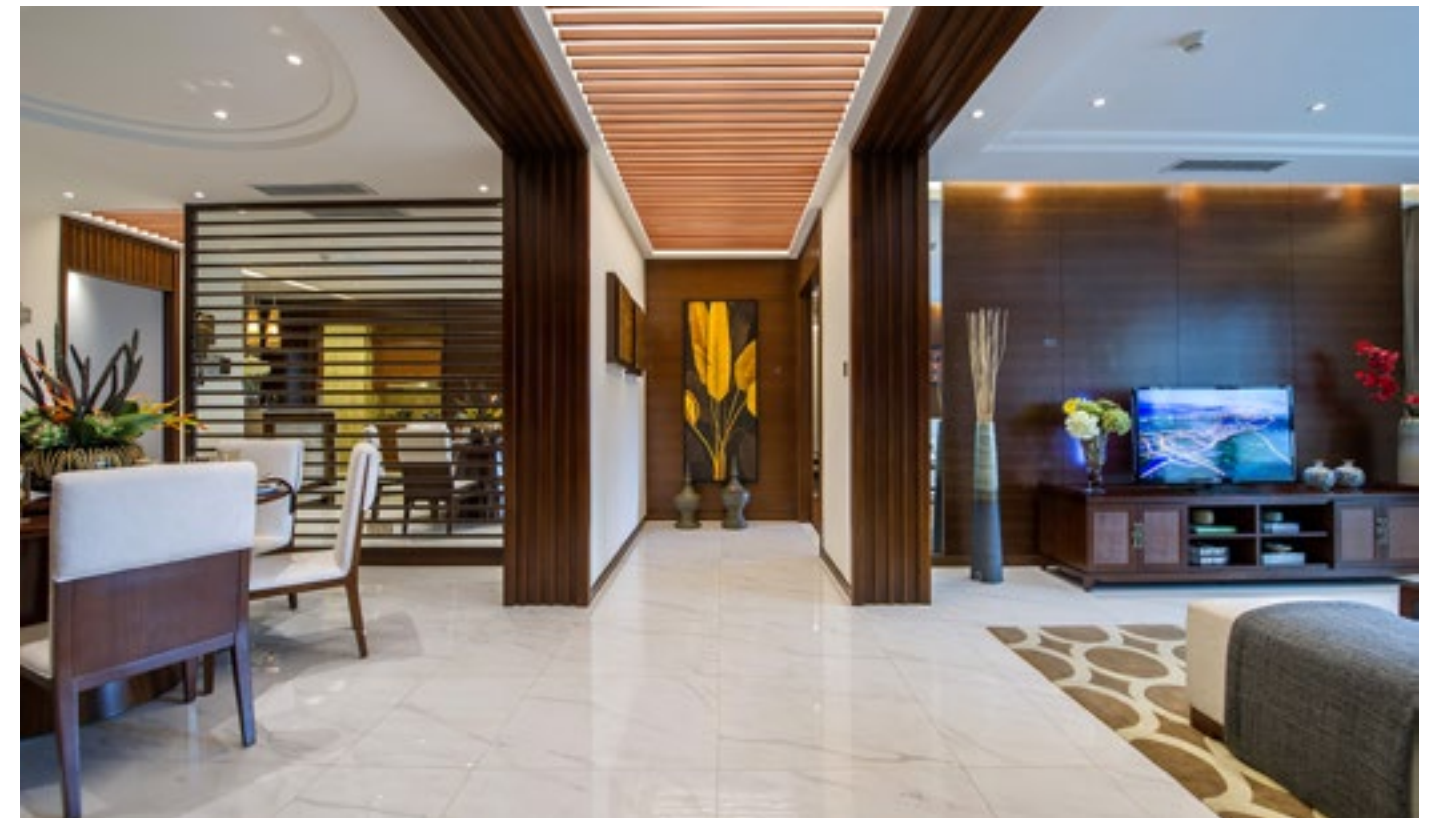
APPLIED PRODUCTS



CALACATTA



SERPEGGIANTO







## RESIDENTIAL

First-class villa environment requires tiles to have comprehensive advantages of high taste and superior quality, and to be strictly up to environmental protection & safety standards. Only this way can ensure realization of the healthy, elegant and ideal housing. GANI marble tile featuring high-end magnificent style, outstanding product quality and perfect service is the best choice for villa projects.



# LUXURY VILLA IN AUSTRALIA

Applied Area: 300m<sup>2</sup>

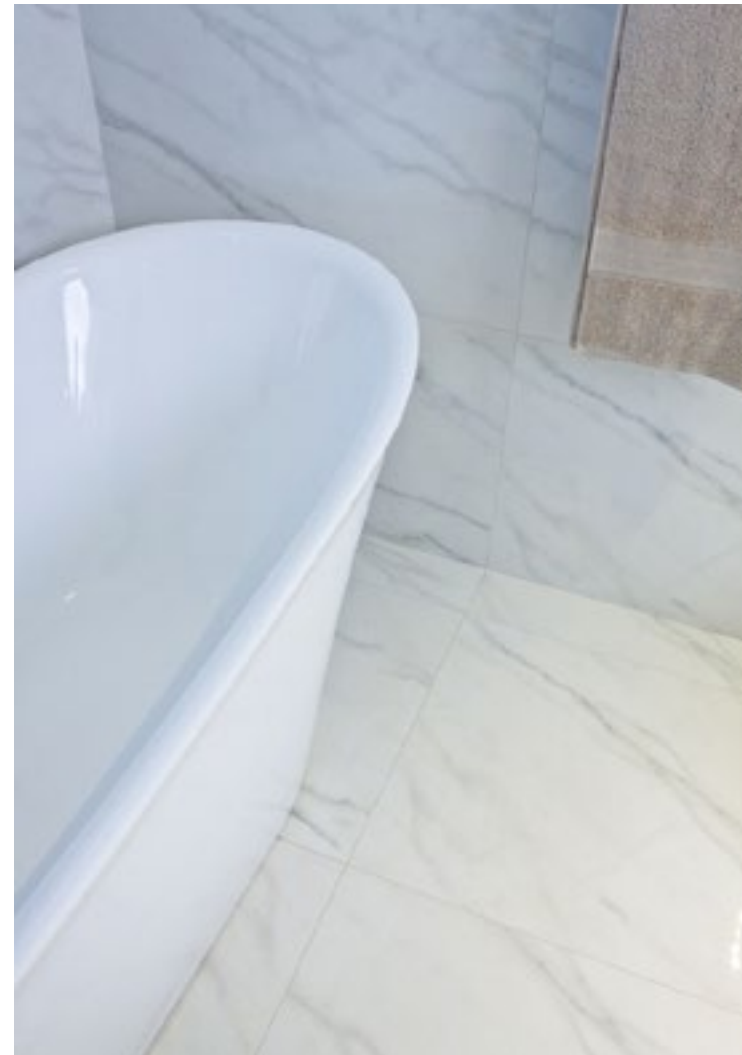
## APPLIED PRODUCTS



CALACATTA



CLOUD GREY





# HIGH END APARTMENT IN SINGAPORE

APPLIED PRODUCTS



VOLAKAS



SOFITEL GOLD





# MODERN APARTMENT, RUSSIA

APPLIED PRODUCTS



ONICE CAPPUCCINO



RAINFORREST BROWN



BLUE OCEAN(6 PCS)









## TURKISH APARTMENT

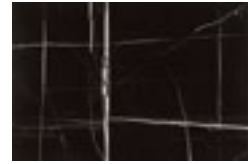
APPLIED PRODUCTS



STATUARIO VENATO



CLOUD GREY



LAURENT BLACK



WOOD GRAIN GREY





KING LAKE, XIAMEN, CHINA

APPLIED PRODUCTS



CLOUD GREY



EMPERADOR DARK



ONICE CAPPUCCINO



VOLAKAS





# VILLA IN NANJING, CHINA

APPLIED PRODUCTS



ARISTON



SOFT MARFIL



JET BLACK

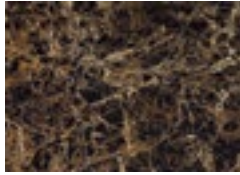




RESIDENTIAL

## MANSION IN NANJING

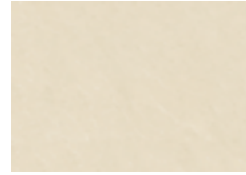
APPLIED PRODUCTS



EMPERADOR DARK



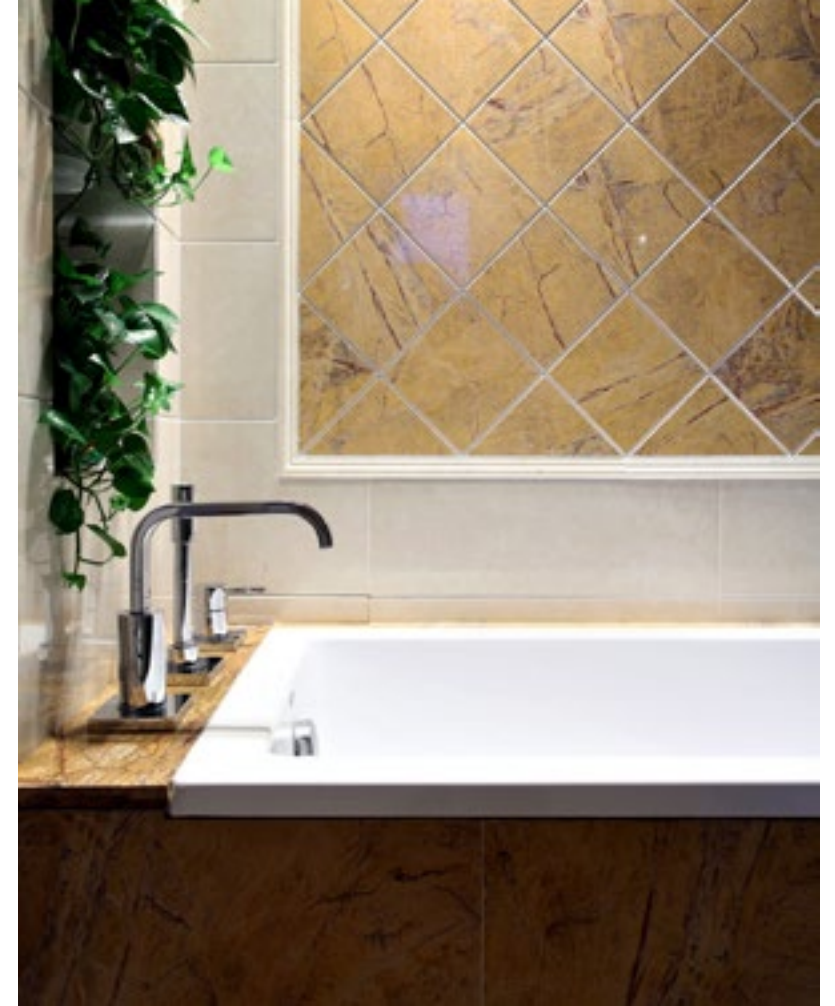
EMPERADOR LIGHT



BOTTICINO SEMICLASSICO



RAINFOREST BROWN(POLISHED)



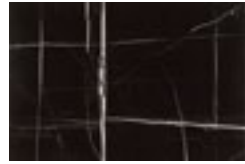


APARTMENT OF INSTITUTE, NANNING, CHINA

APPLIED PRODUCTS



CLOUD GREY



LAURENT BLACK





RESIDENTIAL

## CAMPHORWOOD MANSION IN WUXI

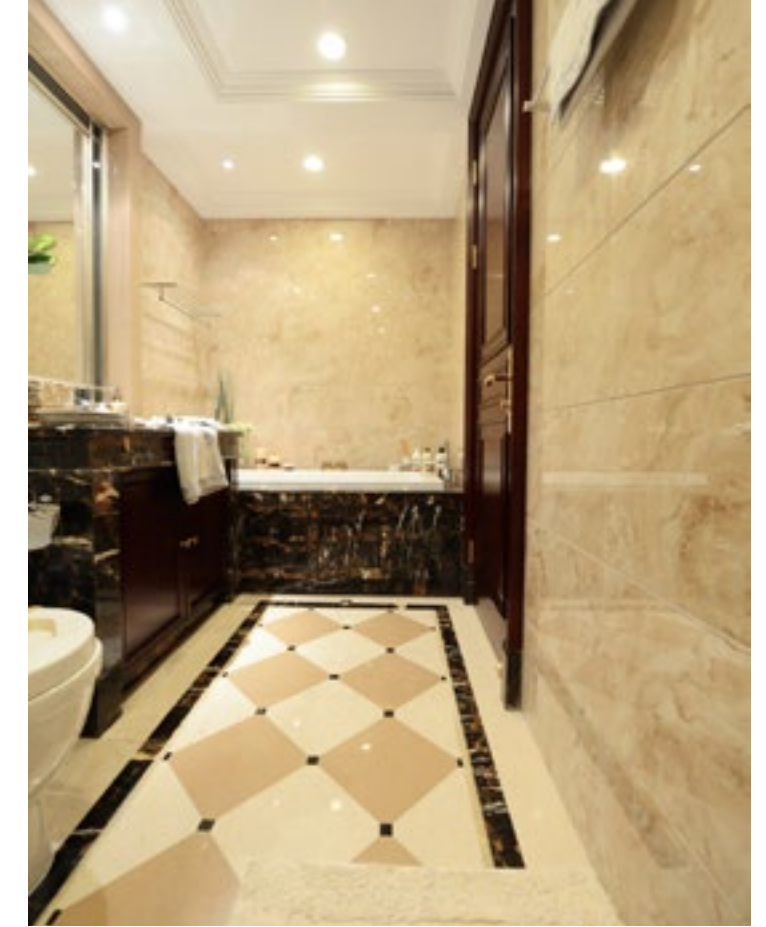
APPLIED PRODUCTS



ONICE CAPPUCCINO



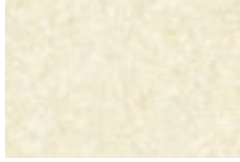
SOFT MARFIL





# SEVEN STARS MANSION

APPLIED PRODUCTS



SOFT MARFIL



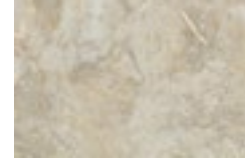
ONICE CAPPUCCINO



MARRON EMPERADOR



EMPERADOR DARK



SLIVEE GREY





## VILLA IN YONGKANG, CHINA

APPLIED PRODUCTS



ONICE CAPPUCCINO



WOOD GRAIN GREY



EMPERAOOR DARK









EASTERN APARTMENT, NANNING, CHINA

APPLIED PRODUCTS



WOOD GRAIN GREY



FIOR DI PESCO CARNICO





### POLY CENTRAL APARTMENT, CHANGCHUN, CHINA

APPLIED PRODUCTS



ROMAN JADE



SOFITEL GOLD



EMPERADOR DARK



PEACOCK WOO



### HUAYU SHANGYUAN, CHONGQING, CHINA

APPLIED PRODUCTS



ARISTON



LAURENT BLACK







### VILLA OF POLY REAL ESTATE IN SICHUAN

Applied Area: 400m<sup>2</sup>

APPLIED PRODUCTS



ITALIAN PORTORO



ONICE CAPPUCCINO



DRAGON CLOUD



### UNION NEW CITY VILLA, CHINA

Address: Shangqiu, Henan, China

Applied Area: 1,000m<sup>2</sup>

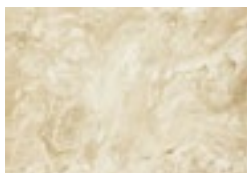
APPLIED PRODUCTS



CALACATTA



FIOR DI PESCO CARNICO



ONICE CAPPUCCINO



ITALIAN PORTORO



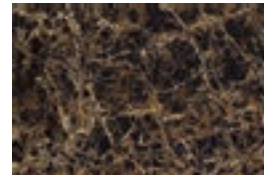


# BADAGUAN VILLA, QINGDAO

APPLIED PRODUCTS



SOFITEL GOLD



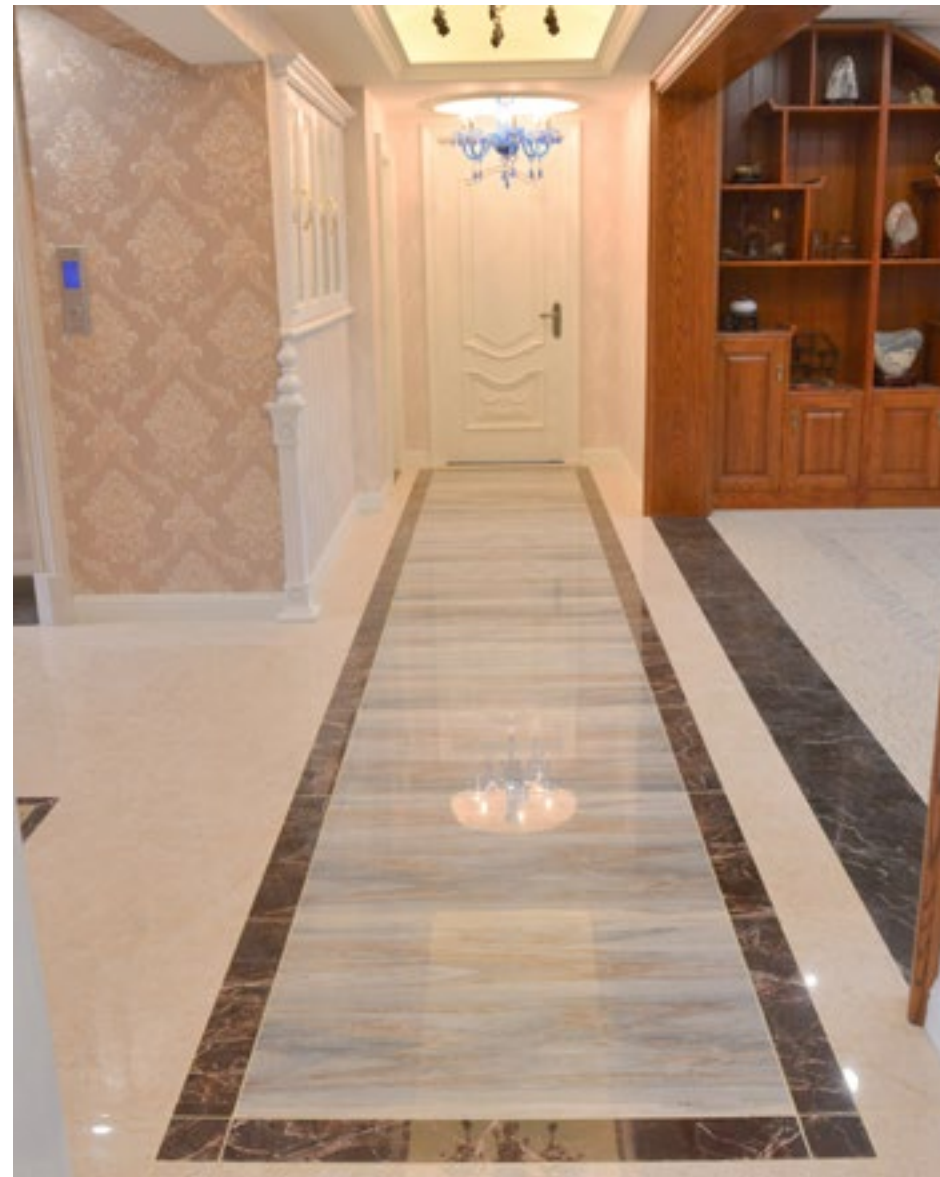
EMPERADOR DARK



RAINFOREST BROWN



PALISSANDRO BLUE





# VILLA IN XIAMEN

APPLIED PRODUCTS



RAINBOW WOOD GRAIN



LAURENT BLACK





## SEVEN STARS MANSION

APPLIED PRODUCTS



VOLAKAS



LAURENT BLACK



EMPERADOR LIGHT





## VILLA IN FUMENG, CHINA

Address: Shijiazhuang, Hebei, China

Applied Area: 3,500m<sup>2</sup>

### APPLIED PRODUCTS



FIOR DI PESCO CARNICO



ONICE CAPPUCCINO



BOTTICINO SEMICLASSICO



CALACATTA





### JIN JUE VILLA, SHANGHAI, CHINA

APPLIED PRODUCTS



VOLAKAS

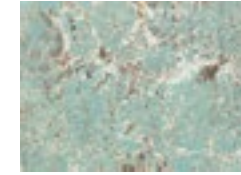


NERO MARQUINA



### YINXIANG MOUNTAIN, QINGDAO, CHINA

APPLIED PRODUCTS



AMAZON GREEN



NERO MARQUINA



TRAVERTINO PERSIANO  
GIALLO



SOFITEL GOLD



ROMAN JADE





## VILLA IN ZHOUSHAN, CHINA

APPLIED PRODUCTS



ONICE CAPPUCCINO



## VILLA IN WANDA, NANJING

APPLIED PRODUCTS



ONICE CAPPUCCINO



EMPERADOR DARK





SHANGLANWAN, SUZHOU, CHINA

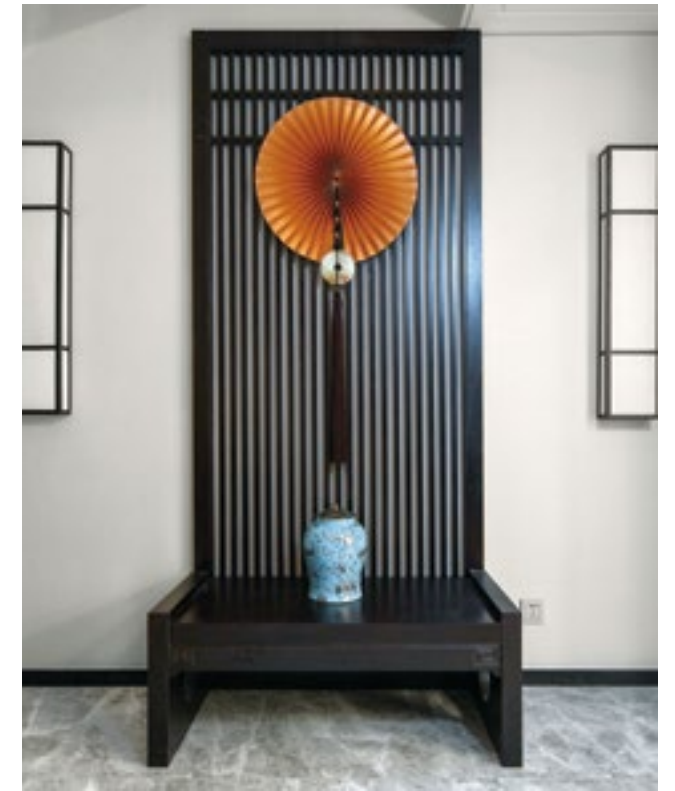
APPLIED PRODUCTS



JET BLACK



CLOUD GREY







## FACADE



## ADVANTAGES OF GANI MARBLE TILES IN DRY-HANGING CURTAIN WALL

A curtain wall system consisting of supporting structures and panels is an outer covering of a building which does not carry any dead load weight. Since it hangs like a curtain, it is also called the hanging wall. It's a light weight wall with decorative effect for modern high-rise buildings. Curtain wall does not bear any dead load weight from the building other than its own one but merely protect the building from wind loads, earthquakes and temperature variation.

Therefore, panels of curtain walls must be weather resistant and durable.

Normal classification of curtain wall: glass curtain wall; metal curtain wall; porcelain plate curtain wall; stone curtain wall.

### MARBLE TILE AND STONE CURTVAIN WALL CONSTRUCTION COMPARISON

Indicator	Marble tiles	Granite	Marble
Steel joist	10% less than that of granite curtain wall		10% more than that of granite curtain wall
Construction period	Short, with quality assurance	Long, with quality assurance	Long, without quality assurance in large projects
Effect of construction	No significant difference with the building design	Hard to achieve the effect of the building design	Hard to achieve the effect of building design, severe chromatic aberration after long time use
Work intensity	Low, need only one person to install	Need at least two people to install	Need at least two people to install
Speed of installation	Very fast	Fast	Slow
Impact of construction on the environment	Without dust and wastewater	With dust and wastewater	With dust and wastewater
Construction tools	A wrench	Tools including a wrench and a portable cutting machine	Tools including a wrench and a portable cutting machine
Damage in construction	Small	Large damage	Huge damage

## BACK-BOLT DRY HANGING SYSTEM

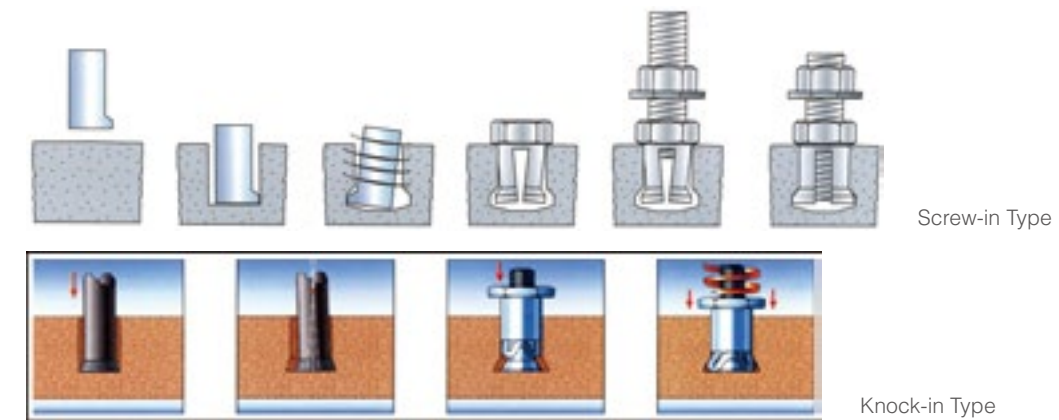
### 1. Advantages

Stable and higher bearing capacity; the common method of curtain wall installation.

### 2. Operating Principle

Drill a tapered hole which is big inside and small outside in the back of the ceramic tile with a dedicated drilling machine according to the designed sizes. Insert the back bolt into the tapered hole, install the screw. The bottom of the pliers-like back bolt will expand, and fit well with the tapered hole, forming a stress-free convex structure; the bracket is fixed to the tile through a non-slip nut, and then installed on the base surface.

Screw-in and knock-in are the common types of back-bolt dry hanging system.



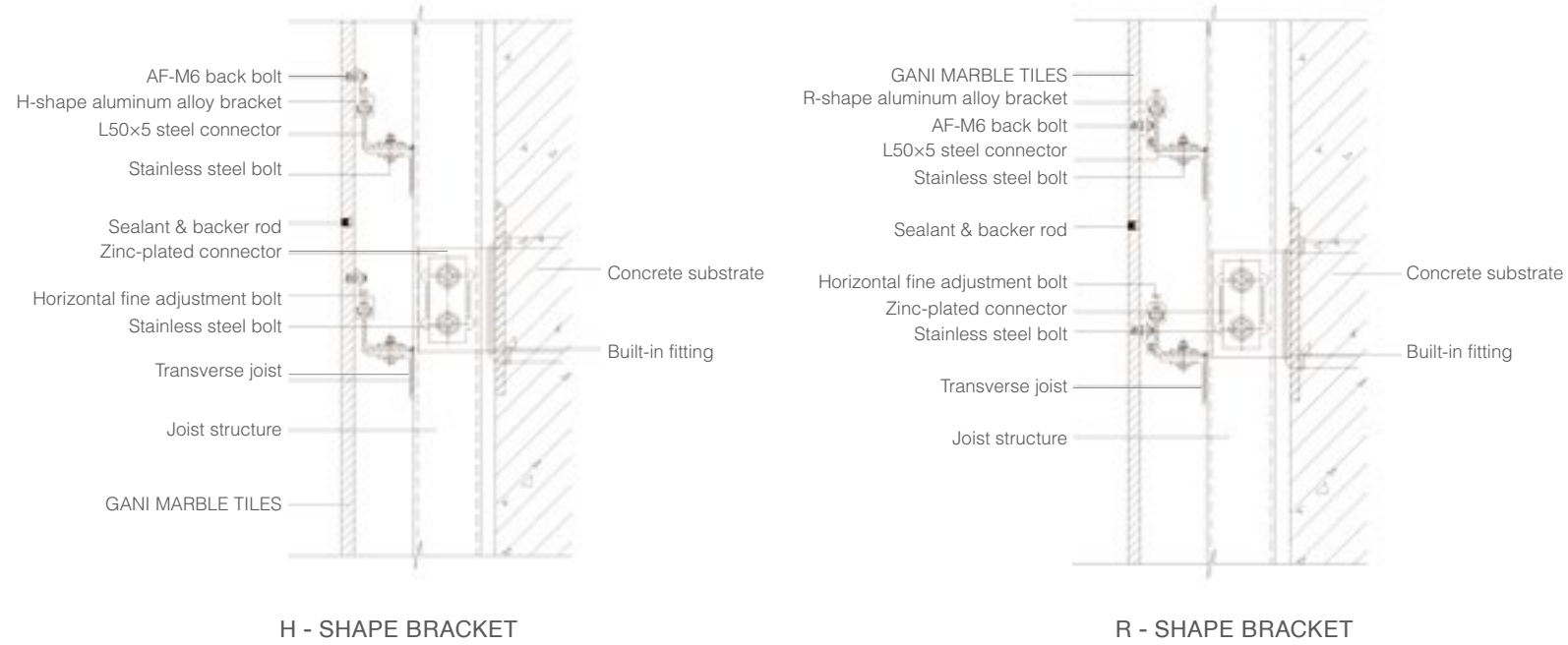
### 3. Accessories

There are C-shape/F-shape/R-shape/H-shape Back-bolt Dry Hanging Systems.

Sample	Name	Type	Size	Amount for each piece of tile
	Back-bolt		M6X5 M6X7 M6X9	Four sets
	Aluminium alloy bracket	H-shape	wide: 50	Four sets
		R-shape	wide: 50	
		C-shape	wide: 50	
			wide: 50	
	Corner connector	L	50*50*5	Four sets

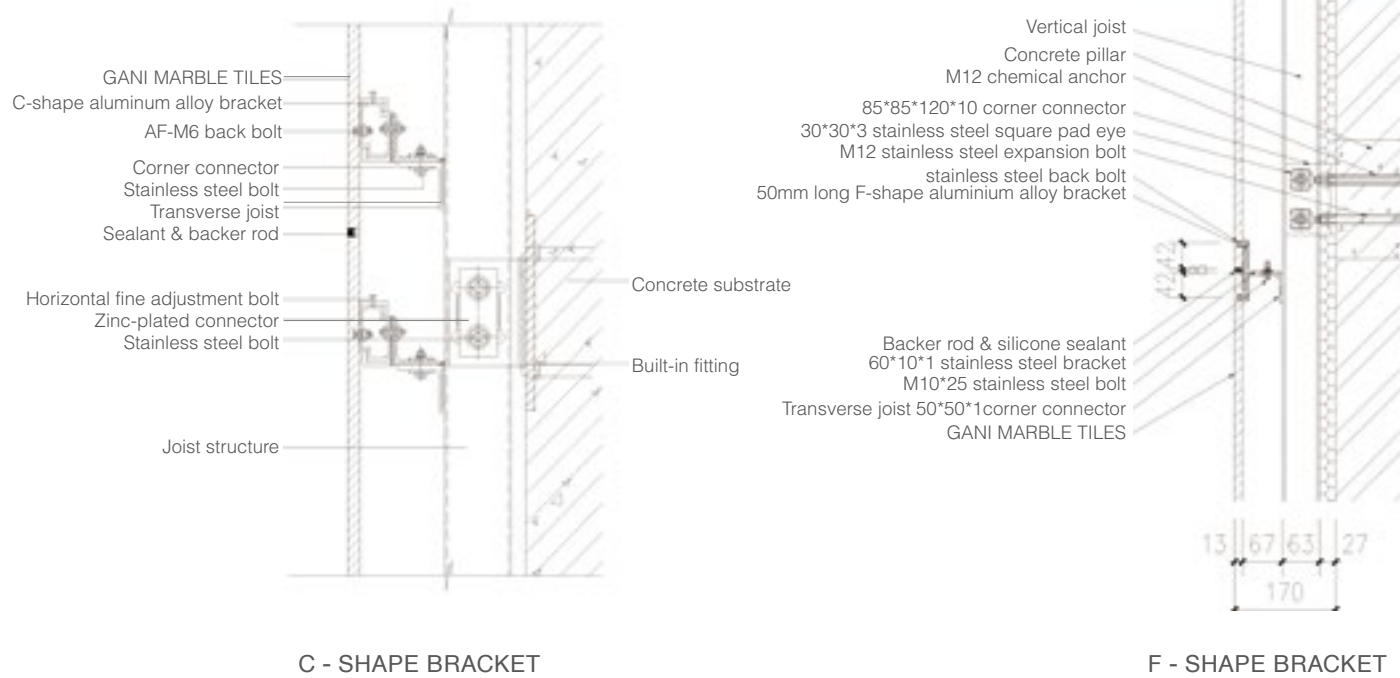


4.Details



H - SHAPE BRACKET

R - SHAPE BRACKET



C - SHAPE BRACKET

F - SHAPE BRACKET

The above information only serves as a general guideline. Specific operations should be based on the actual situation of the project and discussed with architects, designers and construction unit.

BACK-GROOVE DRY HANGING SYSTEM

1.Advantages:

The highest bearing capacity, the safest, suitable for high-rise curtain wall installation

2.Operating principle

Create a dovetail groove in the back of the tile through dedicated back-groove processing equipment according to the designed size. A dedicated anchor component shall be fixed to the tile mechanically and with the structural adhesive and then installed on the base surface through a bracket

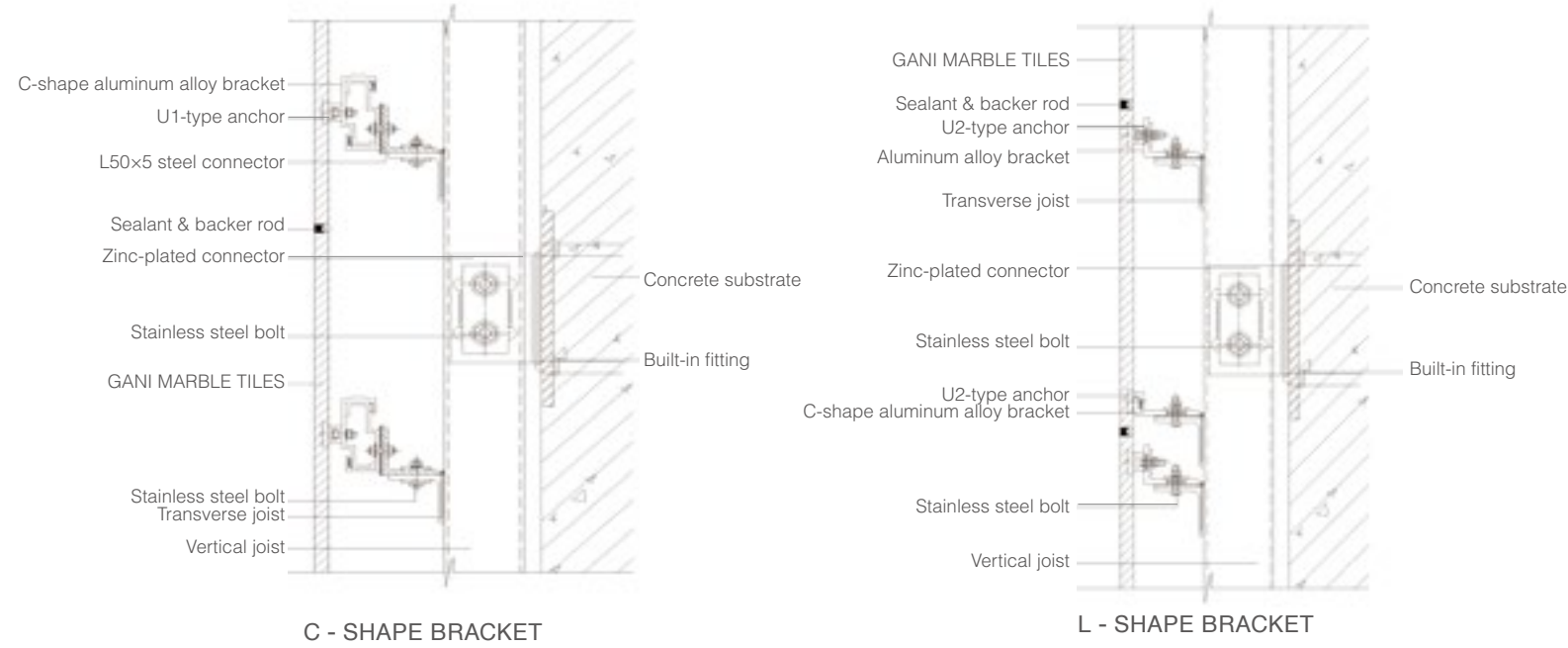
3.Accessories

There are C-shape/ L-shape/ T-shape back-groove dry hanging systems

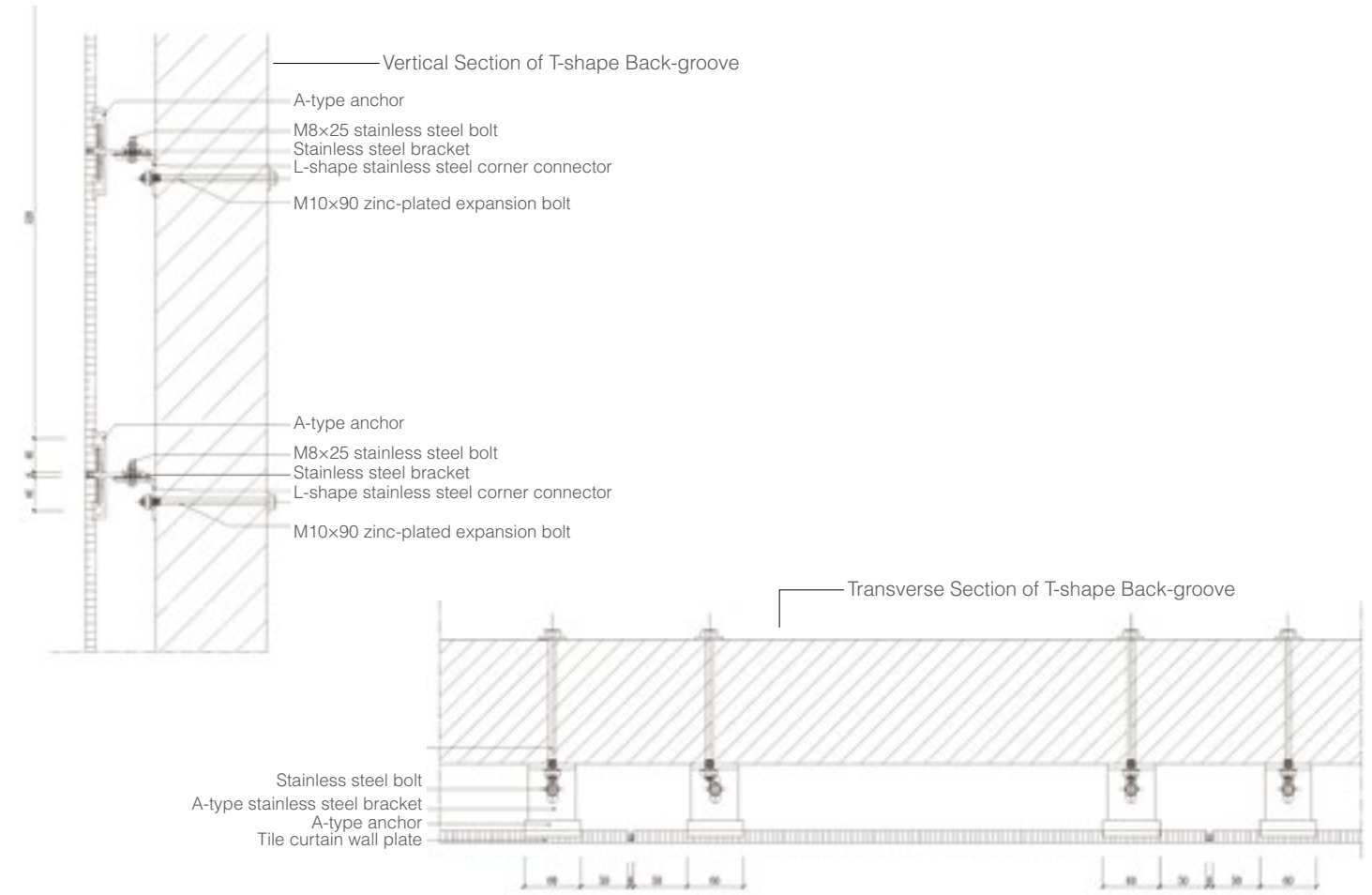
Sample	Name	Type	Amount for each piece of tile
	U1-type anchor(fixed to the tile)	C-shape	4 sets
	U2-type anchor(fixed to the tile)	L-shape	2sets
	A-type anchor(fixed to the tile)	T-shape	4sets
	Aluminium alloy fastener	C-shape	4sets
	Aluminium alloy bolt	L-shape	sets
	Aluminium alloy connector		
	Stainless steel bracket	T-shape	sets



4.Details



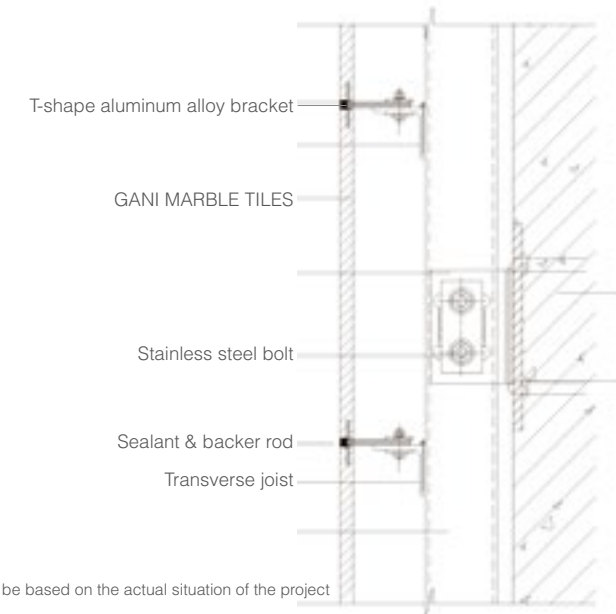
BACK-GROOVE DRY HANGING SYSTEM



SIDE-GROOVE DRY HANGING SYSTEM

- 1. Advantages  
The most economical installation method
- 2. Operating principle  
A 10mm deep groove shall be cut into the sides of tiles with dedicated equipment; then connect to the joist through a fastening.

3. Details



The above information only serves as a general guideline. Specific operations should be based on the actual situation of the project and discussed with architects, designers and construction unit.

The above information only serves as a general guideline. Specific operations should be based on the actual situation of the project and discussed with architects, designers and construction unit.





**1. Jinsheng Times Square, Nanning**

Applied Area: 15,000m<sup>2</sup>

**2. Shengshi Huacheng, Chengxi**

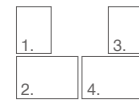
Applied Area: 7,000m<sup>2</sup>

**3. Jinrui Gujing Hotel**

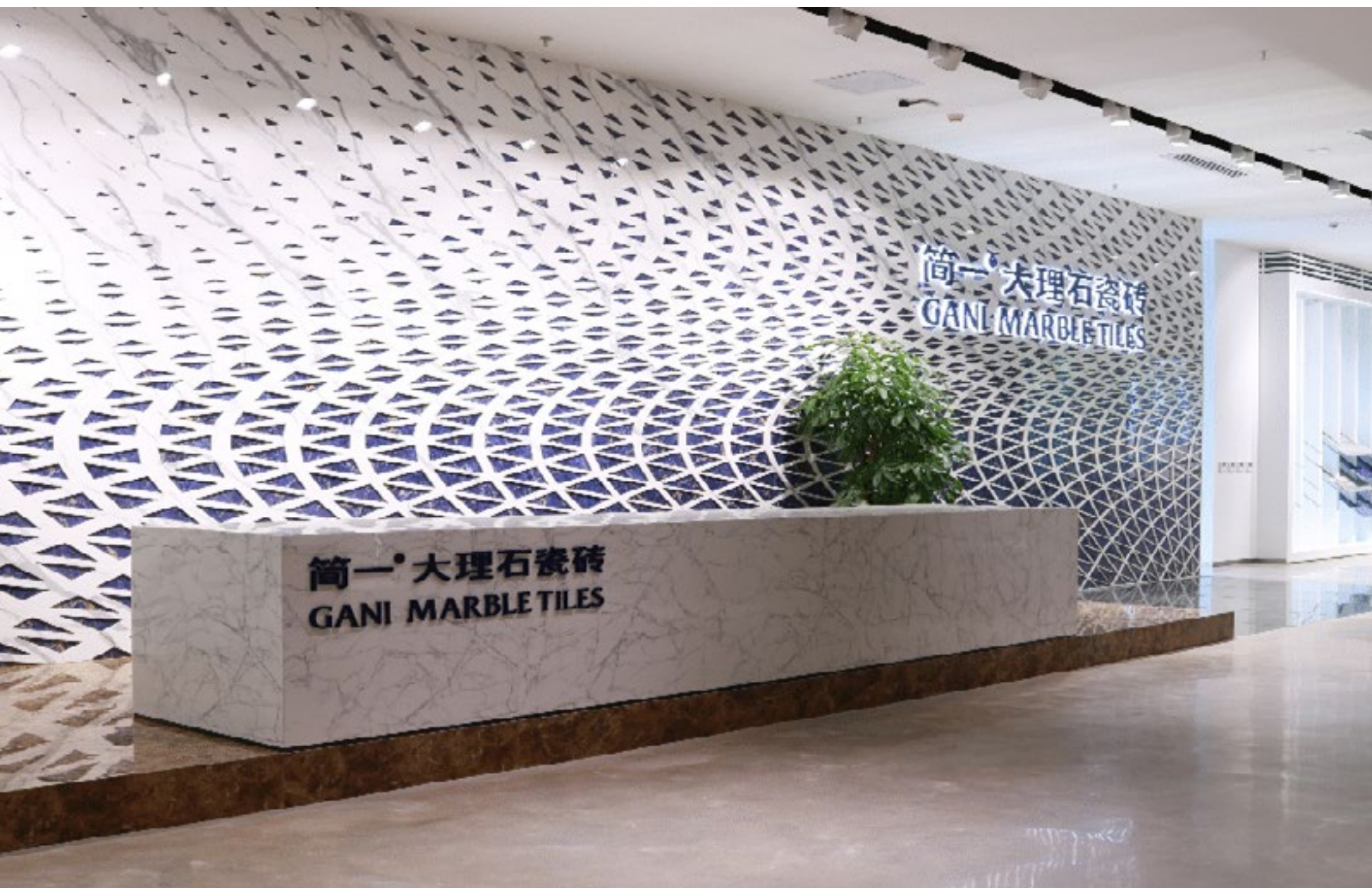
Applied Area: 3,000m<sup>2</sup>

**4. Guangzhou World Trade Clothing City Store**

Applied Area: 5,000m<sup>2</sup>







## COMPANY & PRODUCTS



## GANI SHOWROOM

Ranging from full product collections, core and typical technologies, decorative solutions, mockups to technical surfaces of high aesthetic value, the GANI design and art oriented showroom provides an elegant, hospitable, relaxing and luxury atmosphere satisfying the needs of wholesalers, architects, agencies and designers, in line with the latest trends of various designs.





## FACTORY AND FACILITY


GANI has made the world's largest investment in its production and R&D base, a specialized marble tile production base, with more than 100 million USD invested and an area of over 430 thousand sqm.

GANI is a provincial enterprise of Cleaner Production and also an energy-saving & outstanding enterprise. It has been approved by ISO9001 international quality management system, ISO14001 international environmental management system, EU CE certification and China compulsory 3c certification.








 62+  
COUNTRIES

 500+  
LOCATIONS

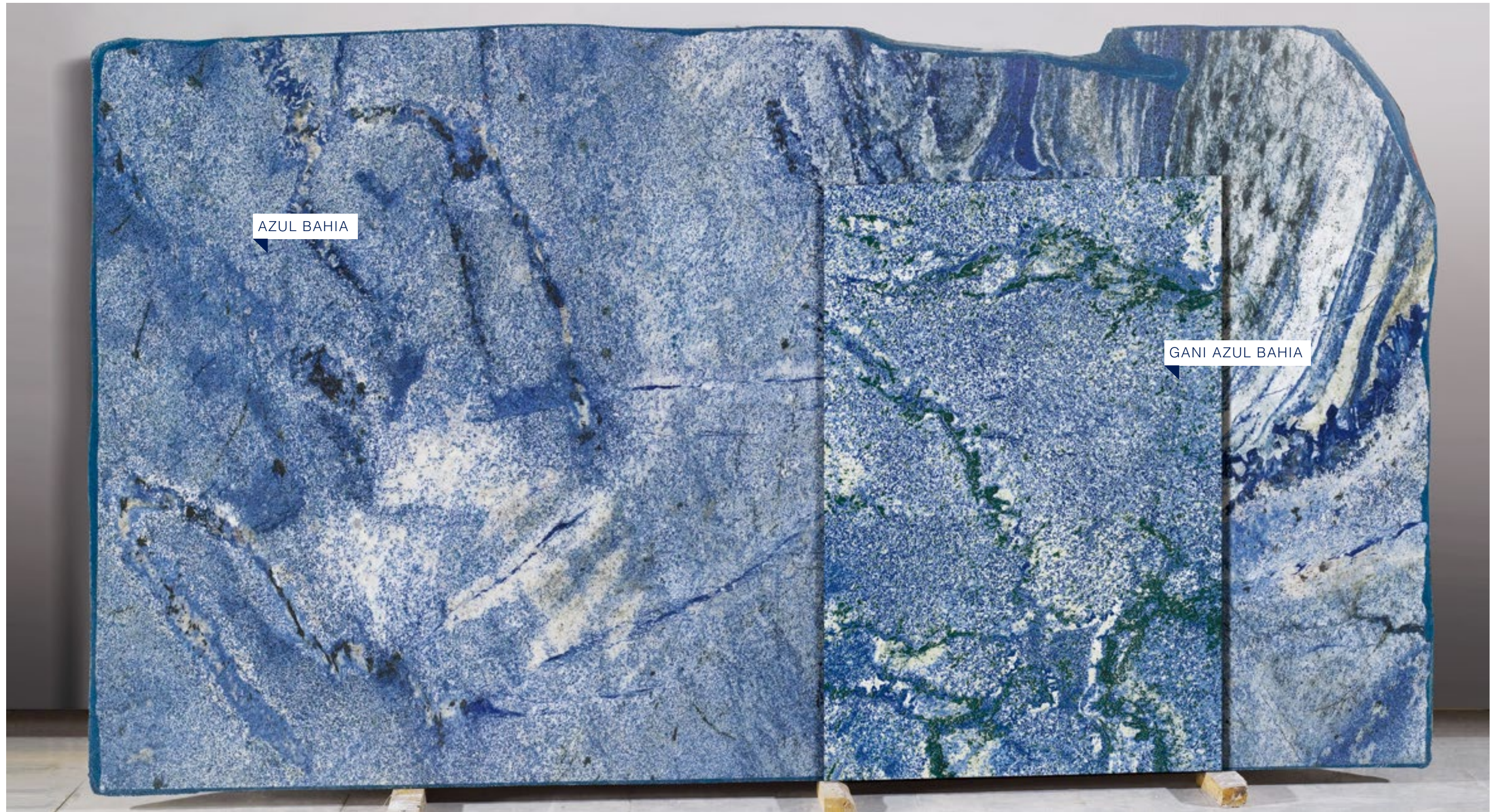
 100+  
PROJECTS

 1 million+  
FAMILIES

GANI is distributing over 62 countries including Italy&France

## GLOBAL SALES NETWORK









Marble Tiles, capturing the natural beauty of marble with high performances of porcelain tiles, is a technological evolution of marbles. GANI MARBLE TILES stems from innovation in cross-boundary convergence, satisfying people's demand for natural beauty through state-of-the-art technology.



## WHY NOT MARBLE

<p><b>PHYSICAL PERFORMANCE</b></p>  <ul style="list-style-type: none"><li>• Low hardness, not wear-resistance</li><li>• Low breaking strength</li><li>• Low density, poor stain resistance</li></ul>	<p><b>CHEMICAL PERFORMANCE</b></p>  <ul style="list-style-type: none"><li>• Hard to control radiation</li><li>• Acid nonresistant</li></ul>
<p><b>DEFECTS</b></p>  <ul style="list-style-type: none"><li>• Common in flaw</li><li>• Unstable color and pattern</li><li>• Obvious crack and defect</li></ul>	<p><b>MAINTENANCE / STABILITY</b></p>  <ul style="list-style-type: none"><li>• Fragile with great waste</li><li>• Unstable supply</li><li>• Hard to maintain</li><li>• High price with stock shortage</li></ul>

## WHY GANI MARBLE TILES

- 01 High Performance**

GANI's marble tiles opens up to new possibilities of applications which are highly resistant to stains, scratches, acids, alkalinity and are of 100% easy maintenance and clean with superior tile body and satisfied Italian Glaze.
- 02 Supply Stability**

The application of marble can also worsen the fragility of our nature, and lead to supply shortage of natural stones.

With creative technologies, we create the marble tiles as a solution to reproduce marble beauty, which contributes to supply stability and quality control.
- 03 Meet the demands**

GANI built its path on consolidated investment in research and technological development with the mission to provide designers, architects and the most demanding customers with marble tiles solutions suitable for every destination of use, ensuring an aesthetic appeal that is in line with market needs and, at the same time, combine them with excellent technical performance.
- 04 Cost effective with twice as much delivery time shortened**

Cost reduction can be significant when it comes to mass production and long term maintenance, at the same time, without devaluing your design idea and nature laying effects. High breaking strength of products achieves less wastage and better quality control during installation.



## OUTSTANDING QUALITY OF GANI MARBLE TILES

### Flatness

Flatness tolerance achieves  $\pm 0.1\%$ . Integrated design system on technology and artistic reach world-class advanced standard. Strictly following ISO 9001, GANI quality assurance and control systems cover the whole product process, from raw material to formula, firing, polishing, inspection, packing and equipment.

### Low Water Absorption

Applying porcelain technologies, GANI MARBLE TILES water absorption rates at  $\leq 0.1\%$ , which is a perfect alternative to nature marble concerning daily maintenance.

### High Breaking Strength

The GANI MARBLE TILES large tonnage press forming and 1230 Celsius degrees firing can achieve breaking strength  $\geq 20000N$ , and modulus of rupture average minimum  $\geq 38MPa$ , which provides better solution on cost save and installation quality.

### High Anti Slip Effect

The GANI concave-convex Anti-slip Micro Technology increases the dry static friction coefficient to 0.7 plus (static friction coefficient of swimming pool nonslip safety walk is 0.5 plus ).

### High Hardness

Mohs hardness scale up to 5.

### High Wear-Resistance

Level 4 for heavy traffic.

### Excellence in Stain Resistance/ acid and alkali resistance

#### Superior Tile Body

GANI MARBLE TILES apply tile body with high performance in heat resistance and deform resistance , whose water absorption  $\leq 0.1\%$ .

#### Satisfied Italian Glaze

The satisfied Italian glaze excels not only in marble revivification and effect, but also compactness.

#### 1230 °C Process

1230 °C high-temperature transparent glaze with appropriate crystallization and replaced pore phase to achieve better abrasion resistance.



## NATURE EFFECT

GANI develops hundreds of Marble Tiles with various patterns, veins, sizes and texture which can be transformed into many artistic works. Based on the customers' demands, we can deliver customized design and production services. GANI makes the marble's beauty be discovered, alive and sustainable while protecting our environment through its wisdom and innovation.

### Ranges and Colors

- 71 regular marble tile designs with different surface types.
- 11 series including white, beige, grey, brown, red, blue, black, green, palissandro and big slabs, special.
- 4-12 patterns for broader application.

### Vein

By adopting the high definition overprint Tech, the vein is exquisite and natural.

### Nature Brightness

With the adoption of light perception control, we restore natural marble light degree.

### Touching Feeling

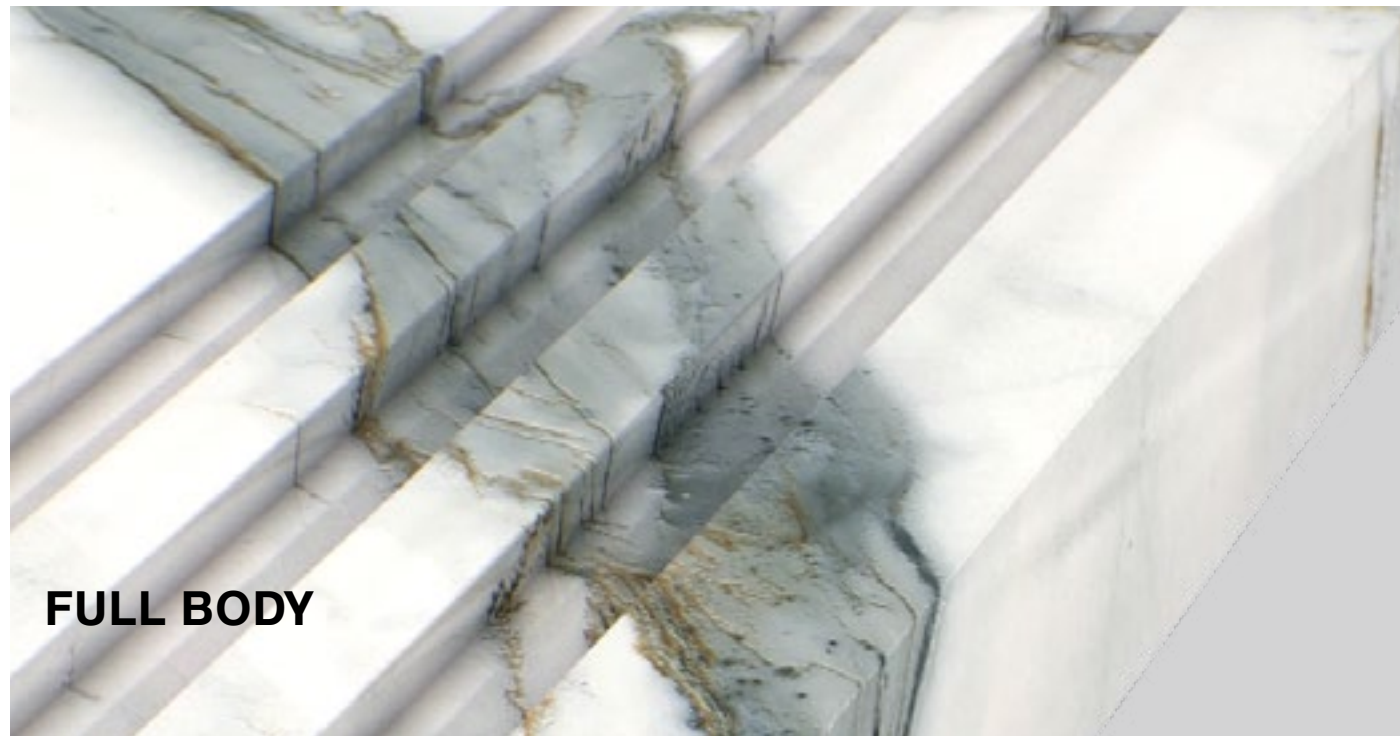
Adopting European top glaze and applying advanced polishing tech, the feeling of marble tiles highly resembles that of natural marble with its smooth details.

### Texture

The core of GANI MARBLE TILES is the unique texture, weight, solidity, and depth by adopting special remixed production technology.







GANI independently developed the world's leading precision powder allocation and synchronous printing core technologies and achieved harmonious color and veins of marble tiles with three-dimensional extension of the product texture in directions of left and right, front and back, up and down.

- √ Beveling
- √ Grooving
- √ Bullnose
- √ Anti-slip shower floor
- √ Wall application
- √ 45 Degree Bevel



BEVELING



BULLNOSE



GROOVING



45 DEGREE BEVEL





## ACCESSORIES APPLICATION

- Mosaic
- Medallion
- Borders
- Hexagons
- Special Tiles
- Special Cuts





# FULL SCALE OF SIZE



900 x 1200

300 x 300

450 x 1200

600 x 1200

900 x 900

150 x 600

600 x 600

900x1200

900x900

810x1620

600x1200

600x900

600x600

GANI Marble tiles launched the new 900mm x 1200mm, 600mm x 1200mm, 900mm x 900mm large-size tiles to create spaces with large patterns, presenting infinite vision with excellent design

BIG COLLECTION IS WITHIN REACH  
810mm x 1620mm,  
900mm x 1200mm,  
600mm x 1200mm,  
900mm x 900mm.  
Bigger size, bigger space  
Express yourself with the BIG inspiration







<b>Physical properties</b> Características técnicas Caratteristiche tecniche	<b>Required standards (ISO)</b> Valor establecido por las normas (ISO) Valori prescritti dalle norme (ISO)	<b>Average value of production</b> Valor medio de producción Valore medio di produzione	
<b>Water absorption</b> Absorción de agua Assorbimento d'acqua	≤ 0,5%	≤ 0,1%	
<b>Sizes</b> Dimensiones Dimensioni	<b>Length and width</b> / Longitud y anchura / Lunghezza e larghezza <b>Thickness / Espesor / Spessore</b> <b>Linearity</b> / Regitud de los lado / Rettilineita` spigoli <b>Wedging / Ortogonalidad / Ortogonalita`</b> <b>Surface Flatness / Planitud / Planarita`</b>	± 0,6% max ± 5% max ± 0,5% max ± 0,6% max ± 0,5% max	± 0,02% ± 1,5% ± 0,1% ± 0,1% ± 0,1%
<b>Modulus of rupture</b> Resistencia a la flexión Resistenza alla flessione	$\bar{X} \geq 35\text{N/mm}^2$ $X \geq 32\text{N/mm}^2$	$\bar{X} \geq 35\text{N/mm}^2$ $X \geq 32\text{N/mm}^2$	
<b>Breaking strenght</b> Resistencia a la ruptura Resistenza alla rottura	Thickness / Spesor / Spessore ≥ 7,5 mm Value / Valor / Valore > 1300N	≥ 2000N	
<b>Stain resistance</b> Resistencia a las manchas Resistenza alle macchie	min Class 3	≥ Class 4	
<b>Abrasion resistance</b> Resistencia a la abrasió Resistenza all'abrasione	Report / informe / Rapporto	≥ Class 4, 2100 cycles	
<b>Chemical resistance</b> Resistencia a la agresión química Resistenza all'attacco chimico	Report / informe / Rapporto	≥ Class GA	
<b>Frost resistance</b> Resistencia a la helada Resistenza al gelo	<b>No sample must show alteration to surface / Ninguna muestra debe</b> presentar roturas o alteraciones apreciables de la superficie / Nessun campione deve presentare rotture o alterazioni della superficie	<b>Frost proof</b> / Non gelifs / Non gelivi	
<b>Skid resistance</b> <b>average coefficient of fricion</b> Antideslizante Coeficiente de fricción media Scivolosita` Coefficiente di attrito medio 0,7	<b>Individual</b> / Individual / Individuale <b>min 0,50</b>	E ≥ 0,7 (Dry method / Método seco / Metodo asciutto)	
<b>Internal radation</b> Radiación interna Radiazione interna	Ira ≤ 1,0	Ira ≤ 0,9	
<b>External radation</b> Radiación exterior Radiazione esterna	Ir ≤ 1,3	Ir ≤ 1,2	